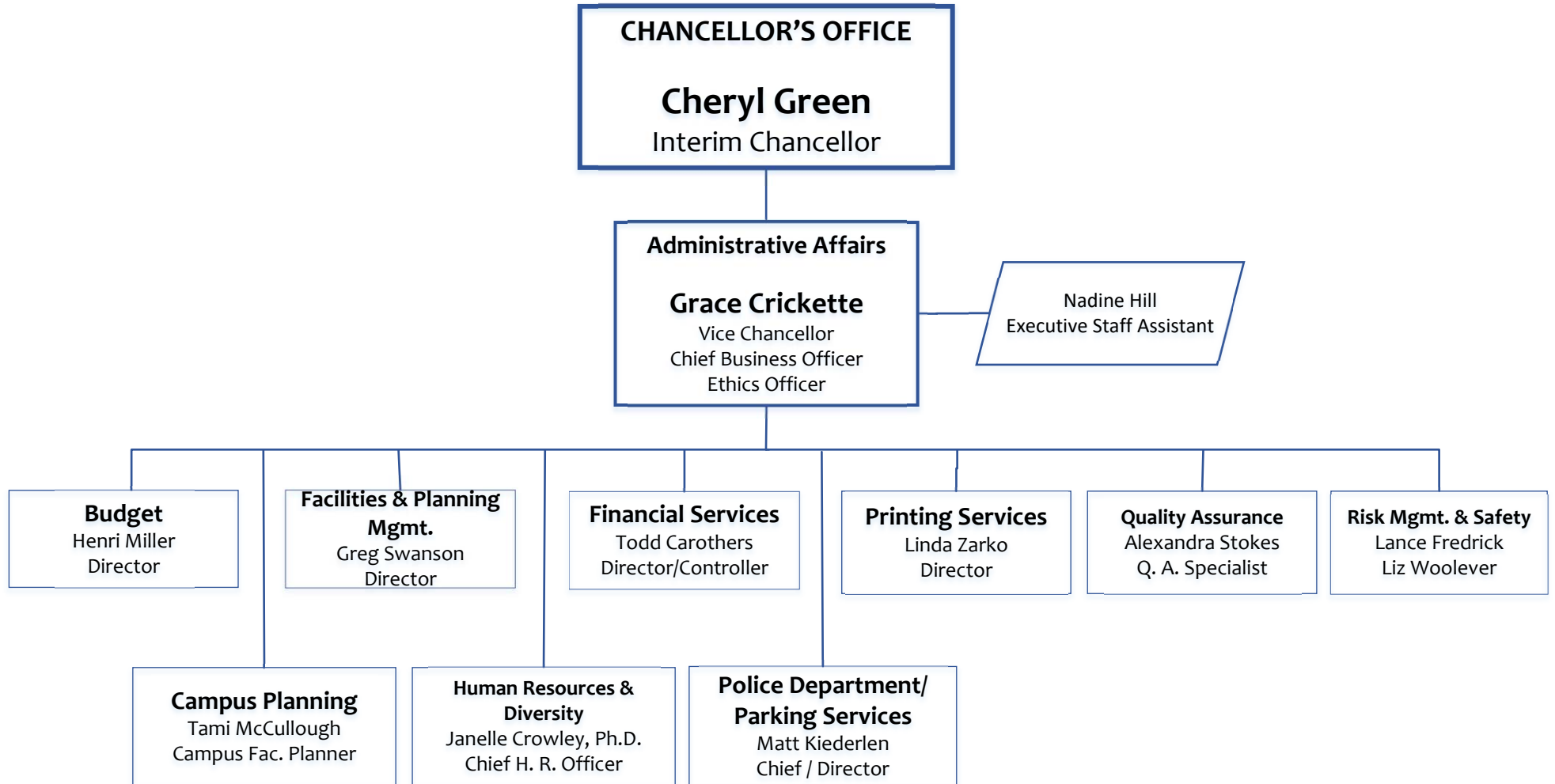
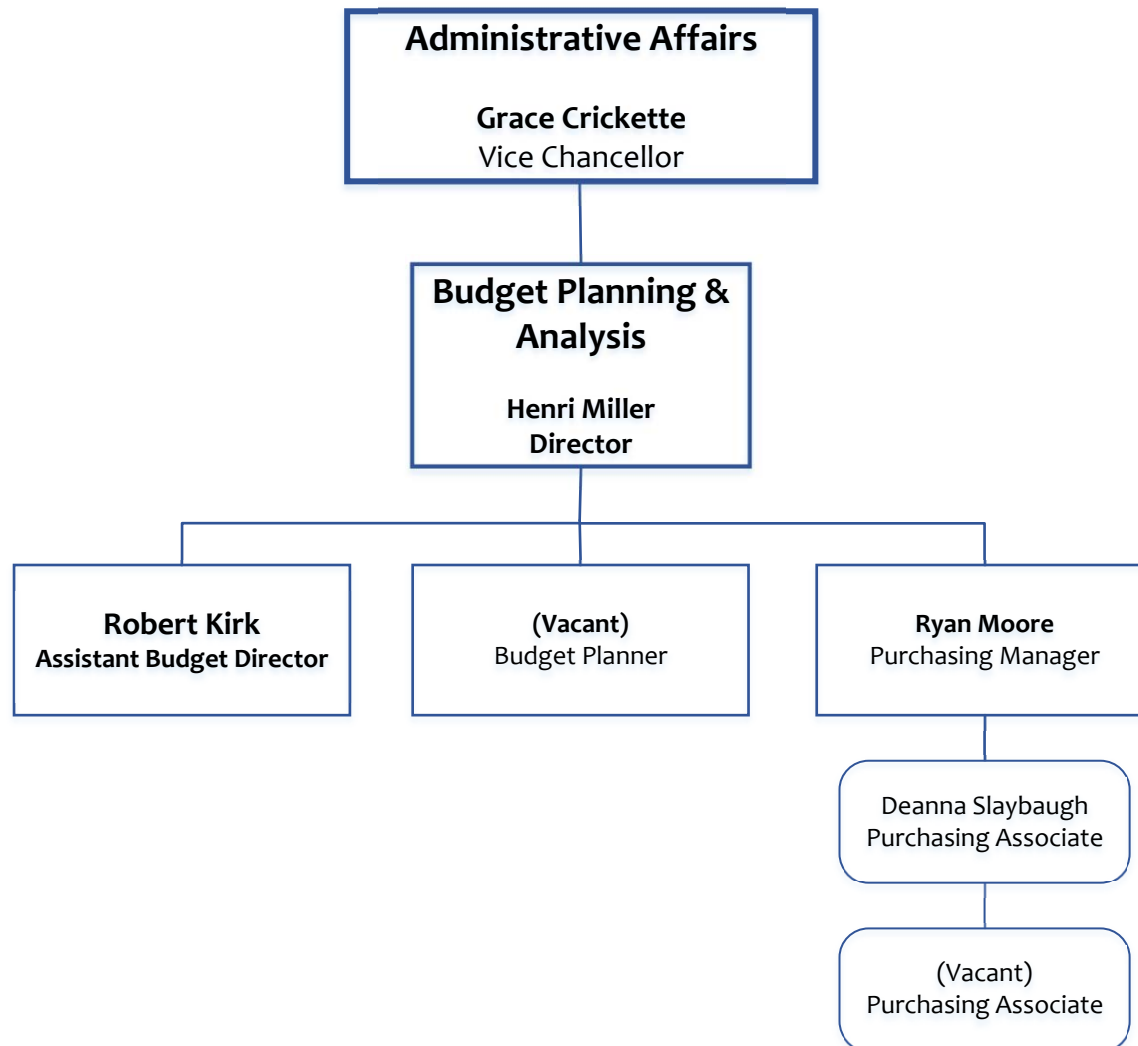


Division of Administrative Affairs



Revised
Rev. 1/10/19

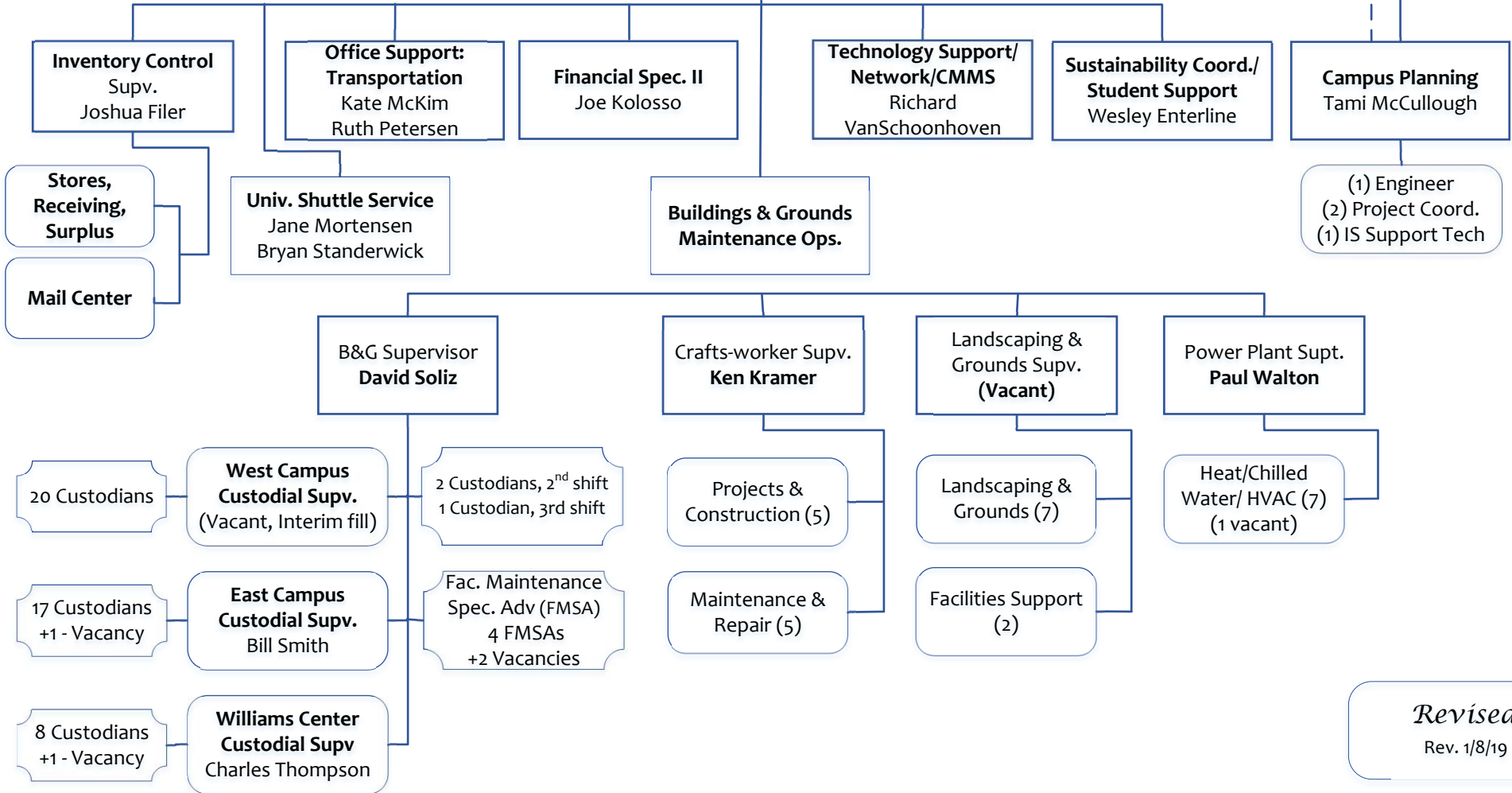
**Administrative Affairs:
Budget Planning & Analysis**



**Administrative Affairs:
Facilities Planning &
Management (FP&M)**

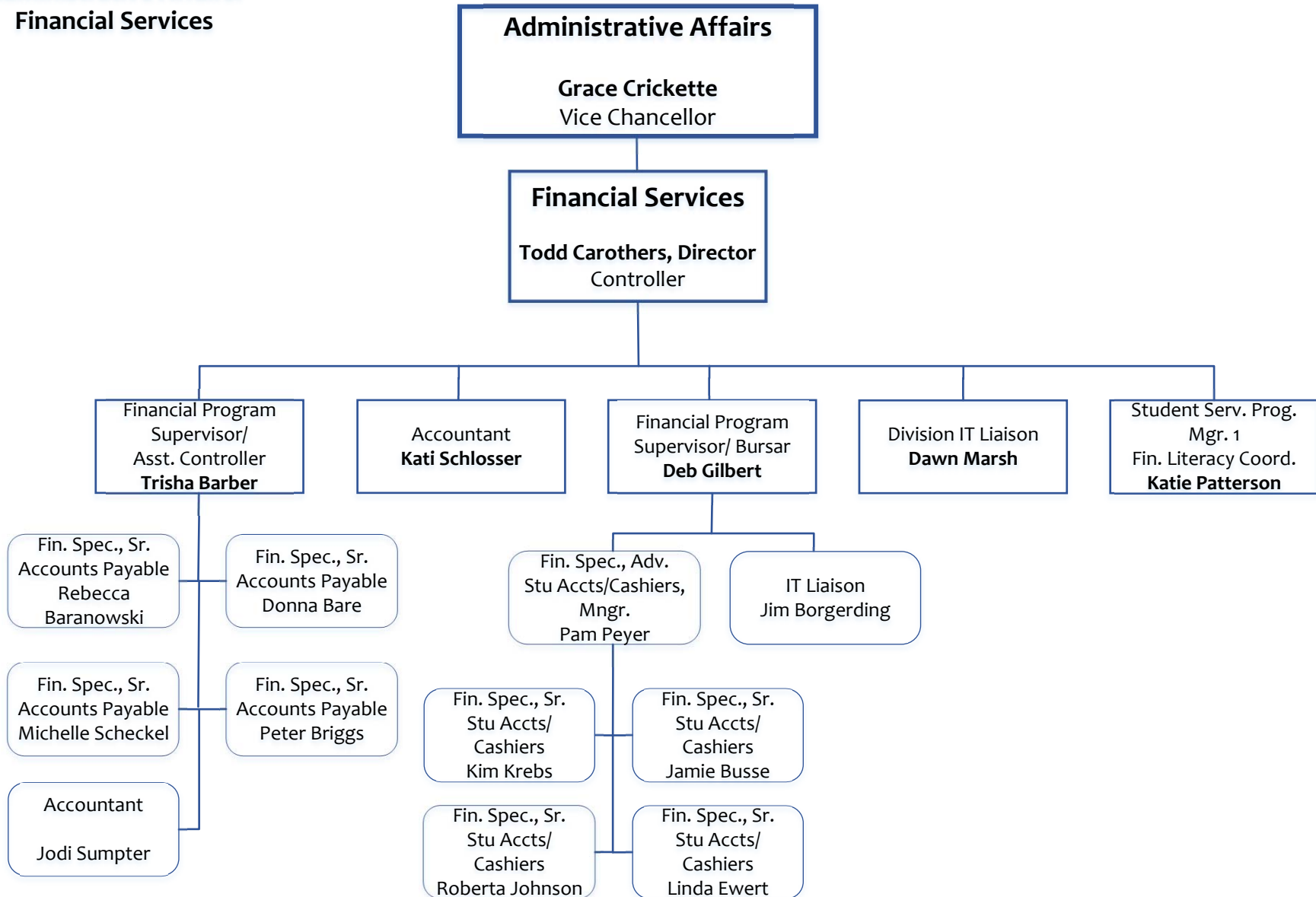
Administrative Affairs
Grace Crickette
Vice Chancellor

**Facilities Planning &
Management**
Greg Swanson
Director

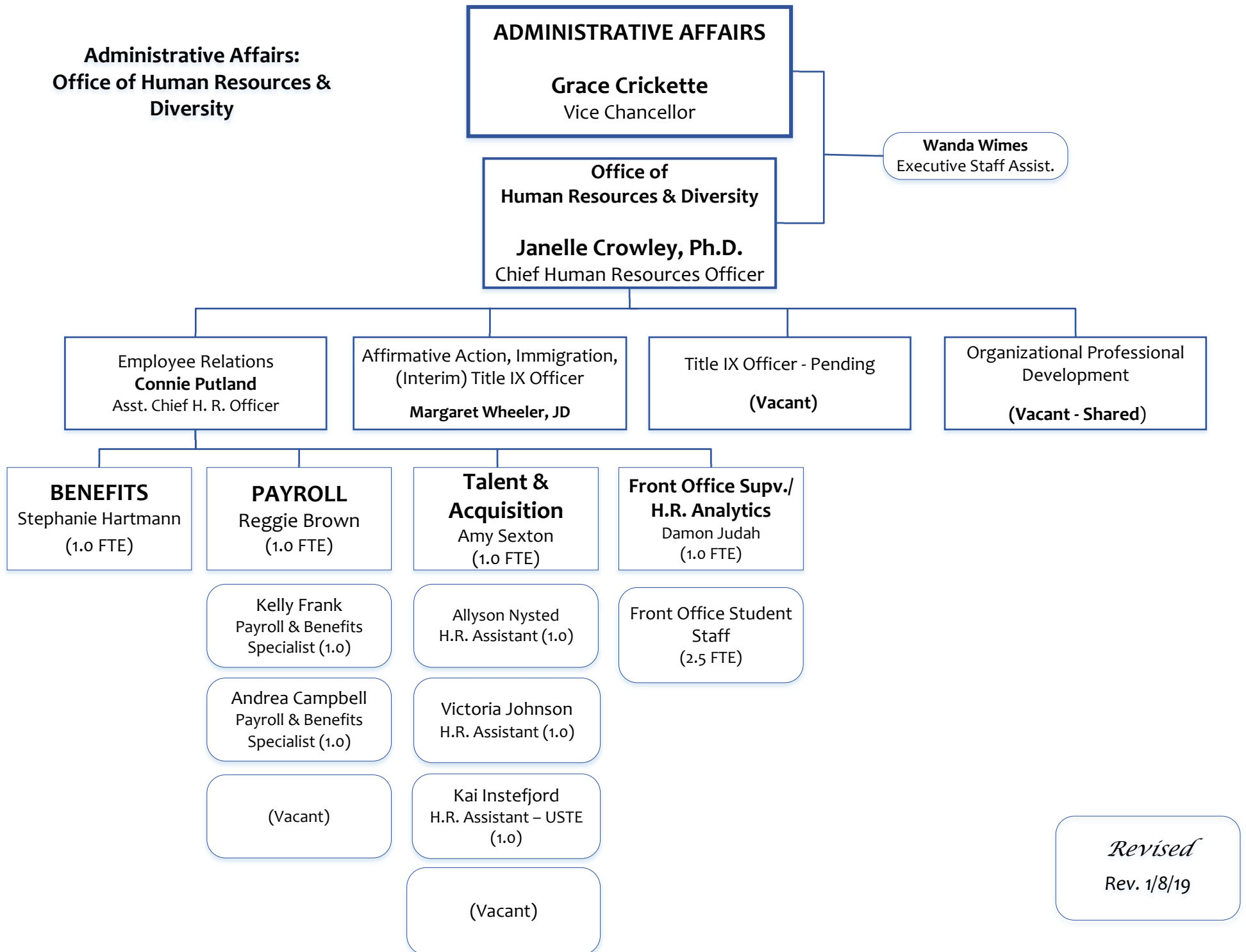


Revised
Rev. 1/8/19

**Administrative Affairs:
Financial Services**

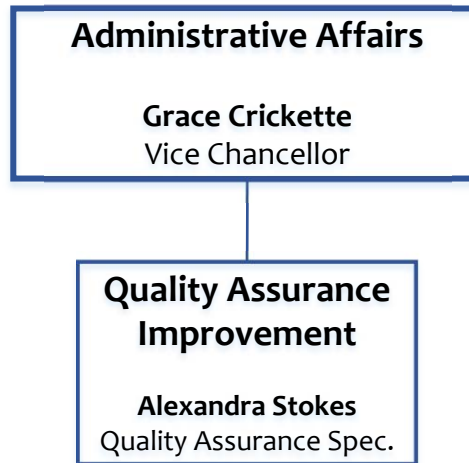


**Administrative Affairs:
Office of Human Resources &
Diversity**

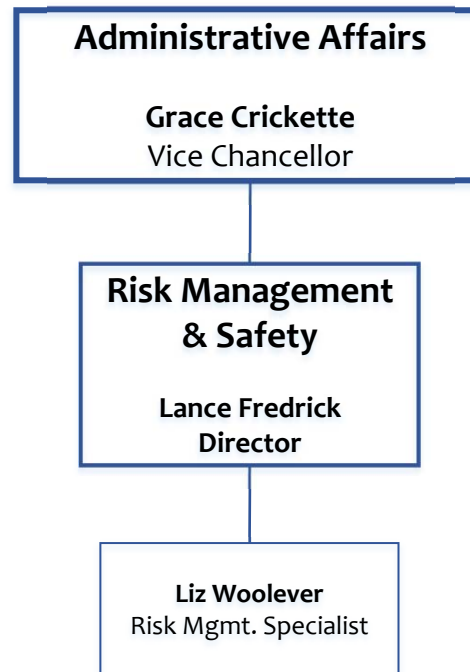


Revised
Rev. 1/8/19

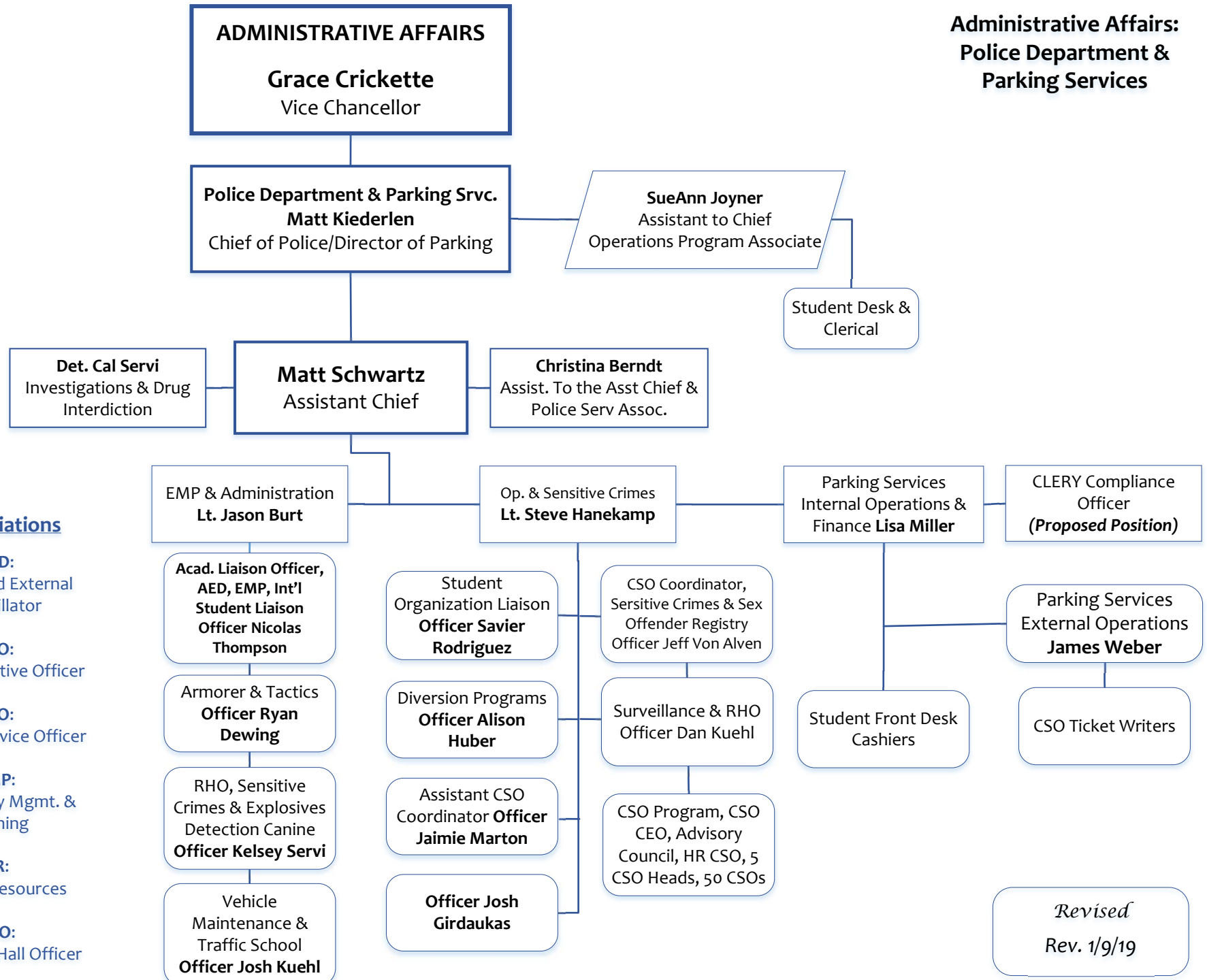
**Administrative Affairs:
Quality Assurance Improvement**



**Administrative Affairs:
Risk Management & Safety
(RM&S)**



**Administrative Affairs:
Police Department &
Parking Services**



Abbreviations

- AED:**
Automated External
Defibrillator
- CEO:**
Chief Executive Officer
- CSO:**
Campus Service Officer
- EMP:**
Emergency Mgmt. &
Planning
- HR:**
Human Resources
- RHO:**
Residence Hall Officer

Revised
Rev. 1/9/19